

Telsec

Product Catalog

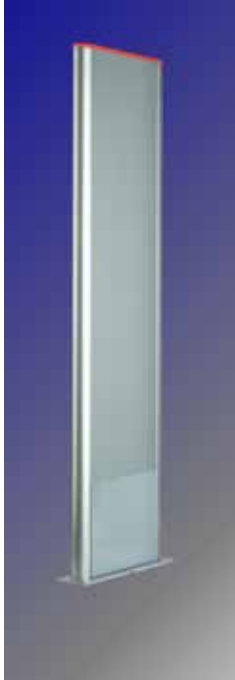


This catalog includes:

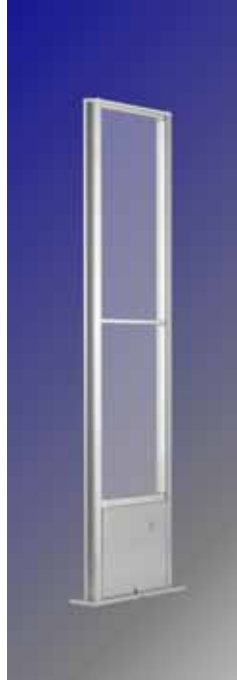
-  Surveillance Systems
-  Peoplecounting Systems
-  Tags, Pins & Detachers
-  Deactivators
-  Accessories

Surveillance Systems

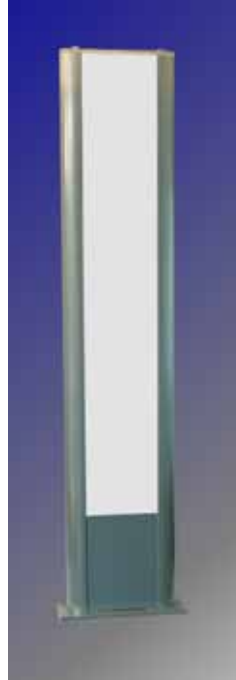
Surveillance Systems



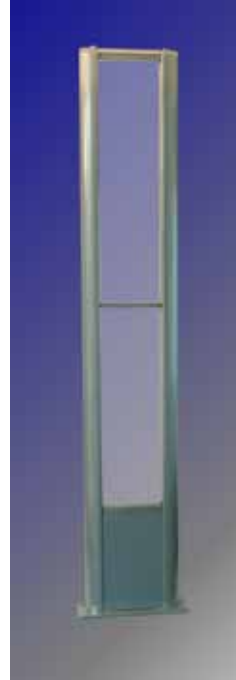
Hyper



Hyperplexi



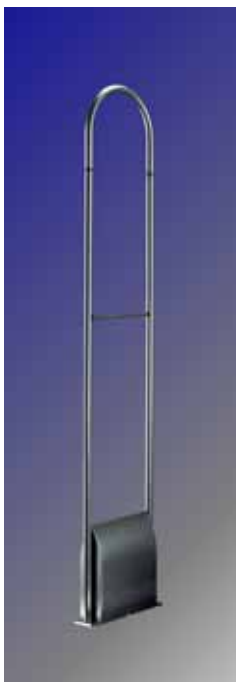
Hyper 25



Hyperplexi 25



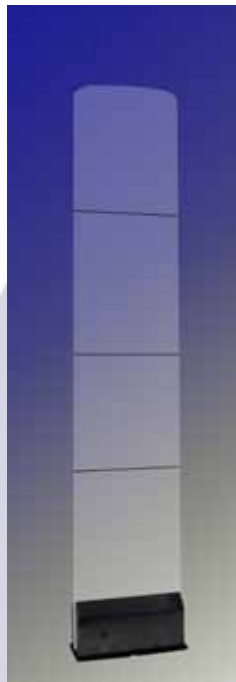
Dolomite



QG



QGS



Maestro



Metal/Magnet
Detection



The Hyper System is especially developed for Hypermarkets, Supermarkets and DIY-stores. It is very robust and can handle "rough treatment". Due to the build-in coverplate, it is ideally suited to be placed at the checkout counter.

Features:

- Check out system (food-, drug-, book- and office supply stores)
- Extremely durable against vandalism
- Equipped with the digital QF Superscan Electronics
- Perfect detectionrate
- Integrated screen.

Technical details:

Material pedestal : Aluminium with two trespa panels and a metal box.

Frequency : from 1.8 MHz. to 10.5 MHz.

Voltage : 90-240V. 50-60Hz.

Dimensions per antenna:

Length : 1514mm.

Width : 400mm.

Weight : 17,10kg.

Baseplate : 440 x 100mm.

Distance between aerials:

Other distances are depending on the dimensions or type of the tags.

Optional:

- Can be supplied in any RAL-color.
- Also available with one trespa panel and one metal panel (shield)





This stylish pedestal is completely made of metal with plexiglass inlays.

Technical details:

Material pedestal : Aluminium profiles with high quality transparent plexiglass panels

Frequency : from 1.8 MHz. to 10.5 MHz.

Voltage : 90-240V. 50-60 Hz.

Dimensions per antenna:

Length : 1514 mm.

Width : 400 mm.

Weight : 15,13 kg.

Baseplate : 440 x 100 mm.

Distance between aerials:

The distances are depending on the dimensions or type of the tags.

Optional:

- Can be supplied in any RAL-color.
- The plexiglass panel can be printed or engraved with a logo or any other image.





The Hyper 25 looks like the Hyper System. It is also very robust and can handle “rough treatment”. The only difference is that this system is smaller.

Technical details:

Material pedestal : Aluminium with two trespa panels and a metal box
Frequency : from 1.8 MHz. to 10.5 MHz.
Voltage : 90-240V. 50-60Hz.

Dimensions per antenna:

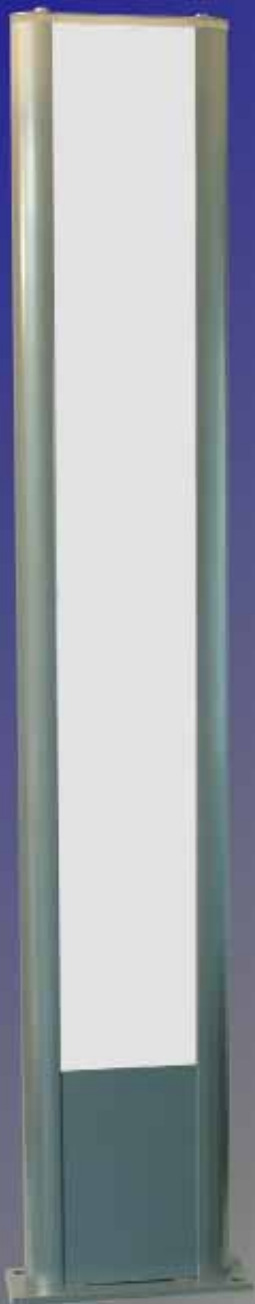
Length : 1514mm
Width : 250mm
Weight : 11,2kg
Baseplate : 298 x 100mm

Distance between aerials:

Other distances are depending on the dimensions or type of the tags.

Optional:

- Can be supplied in any RAL-color.
- Also available with one trespa panel and one metal panel (shield)





The Hyper Plexi 25 is made of metal and a panel of high quality transparent plexiglass. This system looks like the Hyper Plexi System. The only difference is that this system is smaller.

Technical details:

Material pedestal : Aluminium profiles with high quality transparent plexiglass panels
Frequency : from 1.8 MHz. to 10.5 MHz.
Voltage : 90-240V. 50-60 Hz.

Dimensions per antenna:

Length : 1514 mm.
Width : 250 mm.
Weight : 10,3 kg.
Baseplate : 298 x 100 mm.

Distance between aerials:

The distances are depending on the dimensions or type of the tags.

Optional:

- Can be supplied in any RAL-color.
- The plexiglass panel can be printed or engraved with a logo or any other image.





The latest model in the range of our antenna systems. This antenna has two types of lighting in the rest position is blue and an alarm message will flash red. The system is designed to prevent any shoplifting by use of RF tags to your products, that include hard tags, sticker tags and soft tags. The system will be activated by a tag, The red lamp is lit and the system gives a loud signal by the siren.

Technical details:

Material pedestal : Aluminium profiles with high quality transparent plexiglass panels
Frequency : from 1.8 MHz. to 10.5 MHz.
Voltage : 90-240V. 50-60 Hz.

Dimensions per antenna:

Length : 1510 mm.
Width : 400 mm.
Weight : 8,0 kg.
Baseplate : 420 x 50 mm.

Distance between aerials:

The distances are depending on the dimensions or type of the tags.

Optional:

- Can be supplied in any RAL-color
- The plexiglass panel can be printed or engraved with a logo or any other image.





The QG antenna system fits perfectly in a modern interior design. This very “lean” model is completely made out of steel and has standard an integrated lamp for optical signaling.

Features:

- extremely durable against vandalism
- modern design
- microprocessor controlled
- self-adjusting
- very good detection rate
- able to function with a large variety of tags and labels.

Technical details:

Material pedestal	: tubes of steel
Frequency	: from 1.8 MHz. to 10.5 MHz.
Voltage	: 90-240V. 50-60 Hz.

Dimensions per antenna:

Length	: 1625 mm.
Width	: 310 mm.
Weight	: 7,6 kg.
Baseplate	: 325 x 500 mm.

Distance between aerials:

The distances are depending on the dimensions or type of the tags.

Optional:

- Can be supplied in any RAL-color
- Can be installed with a removable pedestal base
- Can be supplied with plexiglass inlays (to prevent “climbing”)





The QGS antenna system fits perfectly in a modern interior design. This very “lean” model is completely made out of steel and has standard an integrated lamp for optical signaling.

Features:

- extremely durable against vandalism
- modern design
- microprocessor controlled
- self-adjusting
- very good detection rate
- able to function with a large variety of tags and labels.

Technical details:

Material pedestal : tubes of steel
Frequency : from 1.8 MHz. to 10.5 MHz.
Voltage : 90-240V. 50-60 Hz.

Dimensions per antenna:

Length : 1620 mm.
Width : 315 mm.
Weight : 5,5 kg.
Baseplate : 330 x 60 mm.

Distance between aerials:

The distances are depending on the dimensions or type of the tags.

Optional:

- Can be supplied in any RAL-color.
- Can be installed with a removable pedestal base
- Can be supplied with plexiglass inlays (to prevent “climbing”)





This stylish antenna consists largely of plexiglass. In case of theft, the system is activated by means of a label, below the red lamp lights up and the system gives a loud signal through the siren.

Technical details:

Material pedestal	: PMMA (Plexi-Glas) Aluminium Base and Sheet-Metal Covers (powdercoated)
Frequency	: from 1.8 MHz. to 10.5 MHz.
Voltage	: 90-240V. 50-60 Hz.

Dimensions per antenna:

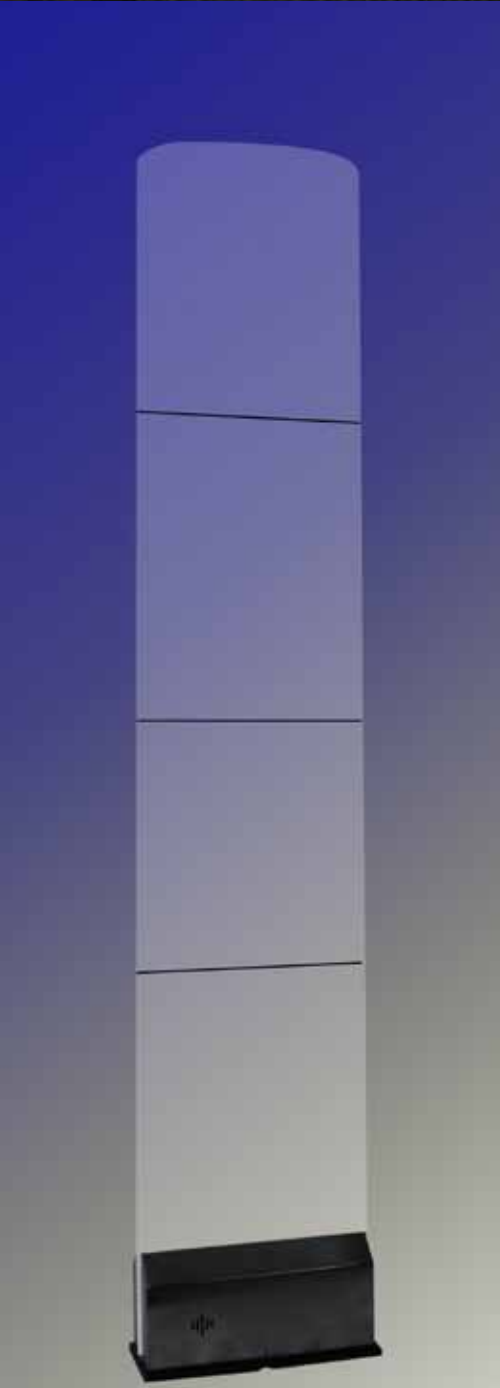
Length	: 1500 mm.
Width	: 300 mm.
Weight	: 14 kg.
Baseplate	: 110 x 305 mm.

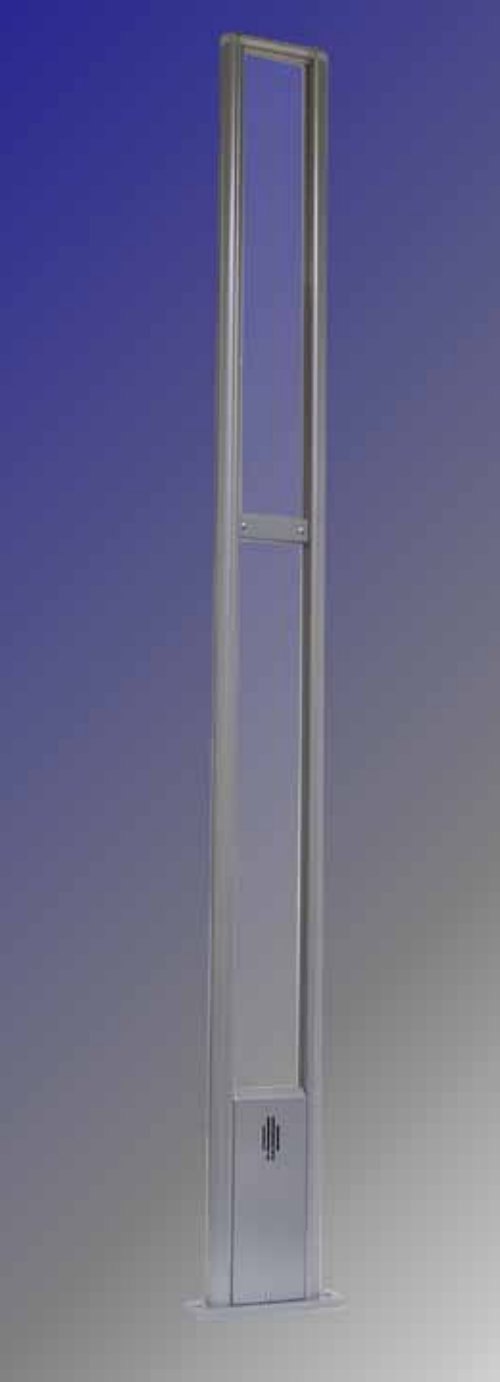
Distance between aerials:

The distances are depending on the dimensions or type of the tags.

Optional:

- Can be supplied in any RAL-color. Standard 9PX (black)
- Can be supplied with plexiglass inlays (to prevent "climbing")
- The plexiglass panel can be printed or engraved with a logo or any other image.





Metal-Magnet Detection System

Telsec has developed a revolutionary system for the retail market which is worldwide patented.

Metal detection:

With this system you will be notified at the time anyone enters your store with a prepared bag or jacket with metal or foil.

The systems warns you with a flashing light on the system and a loud signal and vibration signal on the portable receiver.

This receiver indicates on the display that you have a metal alarm.

Magnet detection:

When someone enters your store with a stolen detacher or another powerfull magnet (unless encapsulated by e.g. rubber) with the intention to detach your tags or labels from clothes, you will be notified with a flashing light on the system and with a loud signal and vibration signal on the portable receiver.

The receiver tells you it's about magnet detection and displays also on which height the magnet was stashed.

Shoplifters will pass your shop when they see these pedestals/ antennas because they know the purpose of this system and how it works.

Technical details:

Antenna material : Aluminum profiles with transparent plexiglass panels high quality
Voltage : 90-240V. 50-60 Hz.

Dimensions per antenna:

Length : 1510 mm.
Width : 143 mm.
Weight : 4,3 kg.
Base plate : 156 x 100 mm.

Distance between antennas:

The pedestals/antennas can only be installed on a maximum distance of 1.50 meters for Metal detection. For Magnet detection or Metal/Magnet detection the maximum distance is 1.30 meters.

Peoplecounting Systems

Peoplecounting Systems



TSR1031-TST1041(XL)
Stand-alone
Peoplecounter



TSR1131RF-TST1141
Battery Powered
Wireless Peoplecounter



TSR2131RF-TST2141
2-directional Battery
Powered Wireless
Peoplecounter



TRP1091 - Repeater



TSR2032RF-TST2042
2-directional



TCU1051E
Telsec
Control Unit - Ethernet



TWP1156
Wireless Peoplecounter
System



TSR1050RF-TST1060
&
TSR1050-TST1060



TSR2070RF-TST2080



TSR1070RF-TST1080
Wireless
Peoplecounter Build-in



The TSR1031-TST1041 is a one direction horizontal people counter. It works on the principle of interrupting a horizontal infrared beam. The Transmitter, TST1041, sends a pulsing infrared beam to the receiver TSR1031. When this beam is interrupted, it is detected by the receiver.

This is displayed on the display in the receiver as a count value.

Technical details:

Power Supply	: 2x 1.5v Alkaline battery AA
Battery Life	: 1 year
Distance transmitter/receiver	: maximum 5 meter (XL maximum 10 meter)
Max. counts on display	: 999999
Zero set possibility	: with magnet on receiver
Way of mounting	: by mounting bracket or Tesa powerstrip
Mounting height	: 1.25 meter recommended

Housing:

Dim. transmitter/receiver	: 102 x 51 x 27 mm.
Material	: ABS Black

Included in set:

TSR1031
TST1041
4x AA Alkaline battery
2x Tesa Powerstrip

Screwdriver
Cleaning tissue
Magnet keyhanger for installation
Installation manual

Optional:

Also available in white:

TSR1031-TST1041 WHT and TSR1031-TST1041XL WHT

The following mounting brackets are available for this people counter:

PFM1000	Peoplecounter Floor Mount
PHB1000	Peoplecounter Hyper Bracket
PPB1000	Peoplecounter Pipe Bracket
PRB1000	Peoplecounter Rotation Bracket





In the range of battery powered people counters Telsec ESS adds a wireless people counter. The TSR1131RF-TST1141 is a battery powered wireless people counter which can be used in combination with TCU1051E.

It works on the principle of interrupting a horizontal infrared beam. The Transmitter, TST1141, sends a pulsed infrared beam to the receiver TSR1131RF. When this beam is interrupted, it is detected by the receiver. This is logged in the receiver as a count value. Each counter has its own unique ID. This way several counters can work together within their wireless range.

The low power design brings battery replacement to the minimum. A battery detection will inform you through the TCU1051E or Telsec Management Software when the batteries need to be replaced.

Technical details:

Power Supply	: 2x 1.5v Alkaline battery AA
Battery Life	: approx. 1 year
RF Frequency	: 868 MHz. ISM license free band in Europe
Counters inside	: 1. In and out are stored as one count value
Communication	: wireless
Principle of operation	: infrared beam (850nm)
Wireless range	: up to 25 meters. (repeaters available to increase the range TRP1091)
Distance transmitter/ receiver	: up to 12m clear line of sight (no objects between transmitter and receiver)
Max. counts on display	: 999999
Zero set possibility	: with magnet on receiver
Way of mounting	: screws or mounting bracket
Mounting height	: recommended mounting at upper arm height (to distinguish between children and adults)

Housing:

Dim. transmitter/receiver	: 102 x 51 x 27 mm.
Material	: ABS Black

Included in set:

- TSR1131RF	- 2x Tesa Powerstrips®	- Screwdriver
- TST1141	- Installation manual	- Cleaning tissue
- 4x AA Alkaline battery	- Magnet keyhanger for installation	





In the range of battery powered people counters Telsec ESS adds a wireless 2-directional people counter. The TSR2131RF-TST2141 is a battery powered 2-directional wireless people counter which can be used in combination with TCU1051E.

In comparison with the one direction battery powered people counters this counter is able to detect the direction of passage. Two count values are stored in the counter and both transmitted to the TCU1051E as an in and out value. The low power design brings battery replacement to the minimum. A battery detection will inform you through the TCU1051E or Telsec Management Software when the batteries needs to be replaced.

Technical details:

Power Supply	: 2x 1.5v Alkaline battery AA
Battery Life	: Approx. 1 year
RF Frequency	: 868 MHz. ISM license free band in Europe
Counters inside	: 2. In and out separately, each own ID
Communication	: wireless
Principle of operation	: infrared beam (850nm)
Wireless range	: up to 25 meters. (repeaters available to increase the range TRP1091)
Distance transmitter/receiver	: standard 5 meters TST2141 with jumper on low position
Jumper inside for	: - extending width - measurement through several glass doors (placing the jumper it will decrease the battery life)
Way of mounting	: screws or mounting bracket
Mounting height	: recommended mounting at upper arm height (to distinguish between children and adults)

Housing:

Dim. transmitter/receiver	: 102 x 51 x 27 mm.
Material	: ABS Black

Included in set:

- TSR2131RF	- 2x Tesa Powerstrips®	- Screwdriver
- TST2141	- Installation manual.	- Cleaning tissue
- 4x AA Alkaline battery	- Magnet keyhanger for installation	





The TSR2032RF-TST2042 is a two directional horizontal peoplecounter. It works on the principle of interrupting a horizontal infrared beam. This bidirectional counter can make the difference between incoming and outgoing persons or objects.

The Transmitter, TST2042, sends a pulsing infrared beam to the receiver TSR2032RF. When this beam is interrupted, it is detected by the receiver. The receiver checks if it's an ingoing or an outgoing interrupter.

This is logged in the receiver as a count value. The incomming and the outgoing count values are both available by wireless communication. Each counter has its own unique ID. This way several counters can work together within their wireless range.

This people counter is part of the Telsec Wireless Management System.

Technical details:

2 Counters inside (in and out seperately)

Each own ID

Wireless communication to the control unit.

Distance to TCU : Up to 25 meter. Can be extended with TRP1091

Measuring width : 10m (standard version)

Principle of operation : Infrared beam (850nm)

Housing:

Dimensions : 116 x 41 x 30 mm.

Material : ABS Black

Electrical Specifications:

Input : 8-24v DC

Average Current : <15mA each

RF Frequency : 868MHz

Included in set:

TSR2032RF

TST2042

2x Power supply

Magnet for installation

4x Screw ST3,5x25mm

Installation manual

Optional:

The following mounting brackets are available for this peoplecounter:

PAB2000 Peoplecounter Adjustable Bracket

PFM2000 Peoplecounter Floor Mount

PRB2000 Peoplecounter Rotation Bracket





The TRP1091 is the repeater for the Telsec Management System. This device can be used to extend the distance between the Telsec Control Unit and a wireless device from Telsec. When, for example, the distance between a people counter and the TCU is too wide or there are concrete or metal objects between these two, a repeater can repeat the signal from the device to the TCU.

This TRP1091 can also be used in combination with the Telsec Metal/Magnet detection system. When the pager must have a greater detection range, the repeater can take care of this.

Several repeaters can be placed in line to create bigger distances. The repeater can extend the wireless range for up to 20 devices.

Technical details:

Power supply	: 7,6-24V DC
Distance for repeating	: Up to 40m (20m each direction depends on environment)
Frequency	: 868MHz ISM Band
Max. Counters	: 20

Housing:

Dimensions	: 120 x 56 x 22 mm.
Material	: ABS Black

Included in set:

TRP1091
Power supply
Tesa Powerstrip
Magnet keyhanger for installation
Installation manual





The TCU1051E is the ethernet version of the Telsec Control Unit (TCU).

The TCU is the central unit of the advanced Telsec Management System or also known as the Telsec Wireless Peoplecounter System. The TCU can receive wireless the data of up to 20 counters or devices. Counters or devices can be people counters but also counters of e.g. an alarmsystem like an eas system belong to the possibilities.

This data will be processed by the TCU and tailor-made stored in memory to be downloaded by e.g. the Telsec Management Software or cash registers. The TCU1051E has an ethernet/internet connection and can be connected to the network and/or internet. The data inside the TCU can be downloaded by e.g. a pc with a serial connection (TCU1051S). This serial connection can be used to connect other interfaces. Even wireless ethernet belongs to the options.

Technical details:

Power supply	: 8-15Volt DC or AC 50/60Hz
Display	: 4 x 16 Characters
Maximum counters	: 20
PC Interface	: Ethernet
Memory	: About 6 months of data with one counter

Housing:

Dimensions	: 120 x 150 43 mm.
Material	: ABS Black

Included in set:

TCU1051E
Ethernet patch cable
Power supply
868MHz Antenna
Keys for keyswitch
Telsec Management Software
Installation Manual



Peoplecounting Systems

TWP1156 Wireless Peoplecounter System



The Telsec Wireless Peoplecounter System makes it possible to view Peoplecounter values for up to 20 Counters by using a central unit called the TCU (Telsec Control Unit).

By configuring the TCU to a central PC anywhere in the world, you can download and view the stored data from the TCU with the help of the Telsec Management Software.

How the system works

A TCU in a given location receives and stores data from People Counters in that location. The TCU is connected to a central computer with the Telsec Management Software, which downloads the data and saves it in a database. The central computer can be connected to multiple TCU's from different locations.

Installation of the system

The Telsec Management Software can be installed on a central computer. The TCU can be connected to that computer via the computer's Ethernet network.

Using the system

Every hour the Telsec Management Software automatically downloads People Counter data from all TCU's configured in the system. The data from each TCU can be viewed in the software's web based Viewer application. A CSV export of the People Counter data can also be made.

Technical details:

TCU1051

Display	: 4 x 16 character
Maximum counters	: 20
Housing	: Desktop Model
Housing material	: ABS Black
Power supply	: 8-15 Volt DC or AC 50/60 Hz.
PC Interface	: Ethernet
Memory	: About 6 months with one counter and hourly data

Telsec Management Software

Database	: MySQL (standard)
User Interface	: Web Based
Webserver	: Apache HTTP server
Export	: CSV



It is possible to intergrated these type of peoplecounter into a antenna. For instance a Hyperplexi System or perhaps a QG-System.

Optional:

- Can be placed in any antenna. Different models of peoplecounters, depending on the type of antenna.



TSR1050RF-TST1060

TSR1050-TST1060

Type of antenna: QG-system and QGS-system



TSR2070RF-TST2080

Type of antenna: Hypersystem and Hyperplexisystem

TSR1070RF-TST1080

Wireless People counter Build-in Hyper System

TSR1070-TST1080

Stand-alone People counter Build-in Hyper System

Type of antenna: Hypersystem and Hyperplexisystem



There are several different ways to install the peoplecounter. By using Tesa Power Strips or a mounting bracket. Each type of people counter has its own type of mounting bracket.



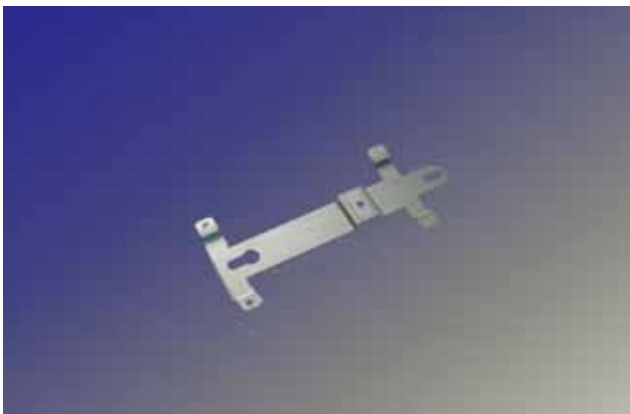
PRB 1000 Peoplecounter Rotation Bracket



PFM1000
Peoplecounter Floor Mount



PPB 1000 Peoplecounter Pipe Bracket



PWB 1000 Peoplecounter Wall Bracket



PAB2000 Peoplecounter Adjustable Bracket

Deactivators & Accessories

Deactivators

RF-AM Deactivator TSP 2X12

The RF-AM TSP 2X12 deactivation system has been designed to deactivate all 8.2 MHz. as well as all 58 KHz. labels at the same time. Due to the widespread use of source tagging nowadays, quite regular, articles arrive into a shopping environment with either RF, either AM or even both types of EAS labels. Problems will occur, when customers are leaving shops with half or non-deactivated items and thus will trigger alarms in other shops with a different type of system as where customers have bought their goods.



RF-AM TSP 2x12 Deactivator consists of a central controller unit and a separate deactivation pad. Its unique design and flexible mounting options allow the deactivator to be mounted flush into a counter, mounted on the surface or under a counter, thus minimizing installation space and reducing unit cost.

Main Features

- Advanced Analogue and Digital Signal Processing
- Attractive slim-line design
- Compatible with all 8.2 MHz. RF, and 58 KHz. systems

Features

8.2 MHz. RF

- Continuous silent RF deactivation
- Deactivatable labels will be deactivated before the beep sounds
- When a label hasn't been deactivated, a beep will be heard and the led will turn red
- Deactivation height is 20 cm.

58 KHz. AM

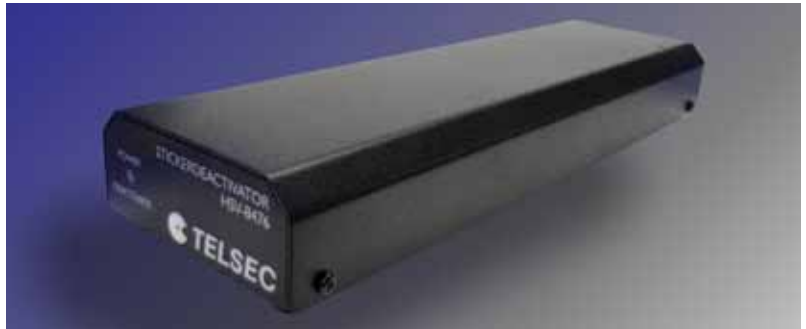
- Multi color led light will be red during start-up
- After an 58 KHz. label has been detected, the deactivator will be activated
- Deactivator will give a short beep
- The led in the antenna pad will turn blue while deactivating
- Controller unit has a green power led
- Deactivation height is 20 cm.

Power

- Power adapter included : 230V AC/15VAC/50-60Hz.

HSV-8476 Highspeed Deactivator

The Telsec stickerdeactivator is developed to deactivate stickertags (the paper label). This deactivator is a pulse deactivator which does not have to be looped.



The deactivator contains a control unit, an adapter of 15V. and a deactivation antenna. The plug-and-play capabilities ensure easy installation. An external signal can be added to the deactivator to switch on or off.

The system in the shop is not affected by the deactivator.

HS Deactivator and System

When the deactivator is placed near a system, it does not need any synchronisation. The system is working on 128 Hz. That means 7.8125msec per period. The system needs about 12 periods for reliable detection. That is 93.75msec. The pulse of the deactivator can arise in the middle of the detection. Those samples of the labels are not discarded but the processor has to look more accurate and needs a little more time to detect the label. Therefore, a save deactivation speed will be 130msec.

Antenna

An external antenna can be made by a single loop of a normal copper conductor connected through a RG174 cable of approximately 80 cm to pins 4 and 5 of the sub D connector. The shape of the antenna will affect the performance of the deactivation!

TECHNICAL SPECIFICATIONS

Supply voltage	: 12 – 15 VAC 50/60 Hz.
Power dissipation	: max 8 VA
Deactivation height with 24 x 36 cm. antenna	: > 30 cm.
Deactivation speed	: 16 levels selected by pulse repeat switch

MAIN FEATURES

- Easy to install (plug and play)
- Deactivation up to 15 inch.
- Mounting on or below table
- Separate pad and power pack

PERFORMANCE

- deactivation height: up to 15 inch.
- values for 4x4 stickertags

BENEFITS

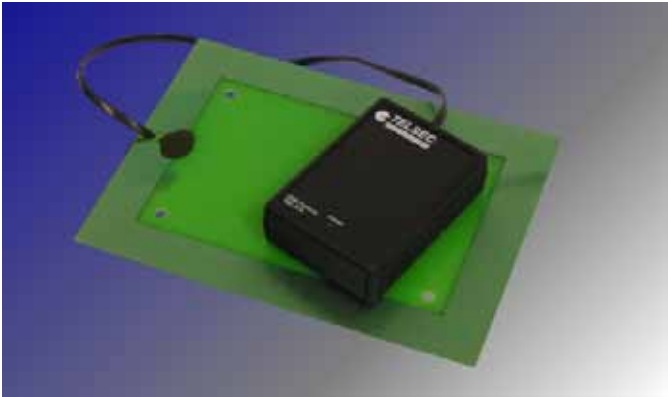
- Reliable deactivation
- High speed deactivation
- Flexible speed
- Flexible antenna size

ELECTRICAL POWER

- Primary Input: 15 Vac 50/60 Hz.
- Operating Temperature: 0° C to 40° C

MECHANICAL

Antenna:
Length: 15.5 inch.
Width: 10.8 inch.
Height: 0.9 inch.
Weight: 4.4 lb.



TSD1810 - Mini Pulse Deactivator

Power supply : 220V AC Adaptor /
50-60 Hz. / approx. 40mA.
(Synchronized to mains)

Dimensions : 67 x 93 mm.

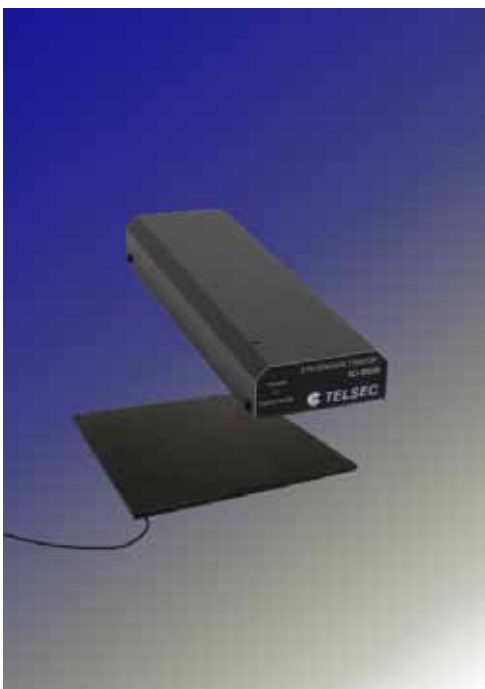
Antenna dimensions: 150 x 200 mm.



SD2766 - Handheld detector/deactivator

Handheld detector (bodyscanner) for detecting
8.2MHz. EAS labels.

Deactivator to deactivate detected labels.



SD26095 - Stickerdeactivator

Power supply : 24V DC

Antenna dimensions: 20 x 30 mm.

Tags, Pins & Detachers

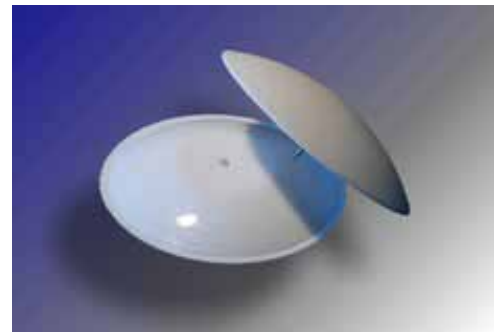
Tags



Ovnitag



Picotag



Golfballtag smooth



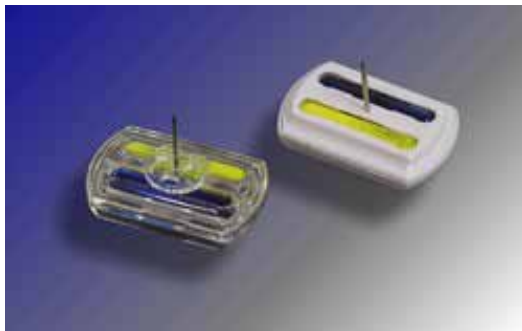
Duraltag



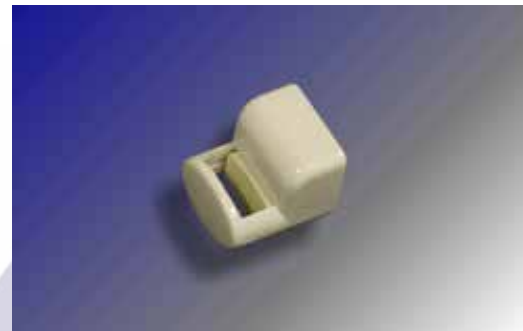
Smarttag



Blackminitag



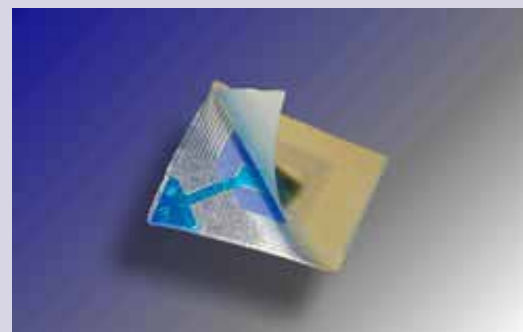
Inktag



Glassestag



Softtag & Flexitag



Stickertag

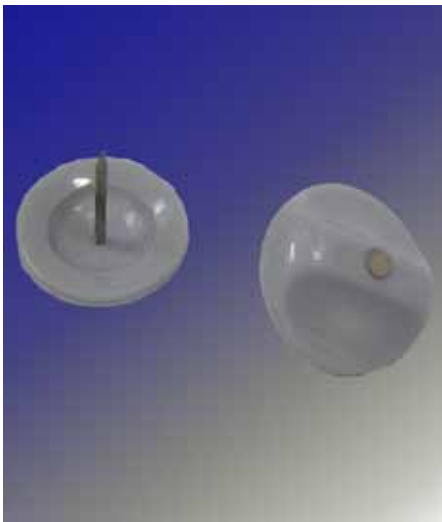
Pins



SKGP



DKGP

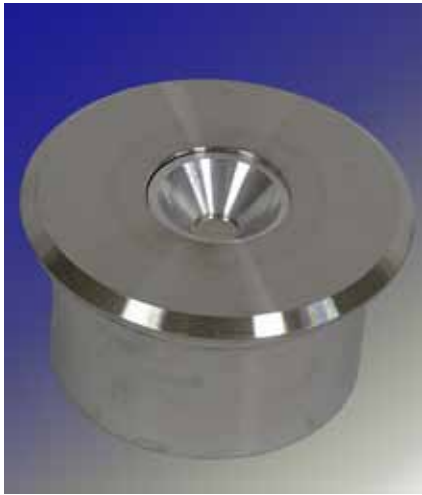


PKGP

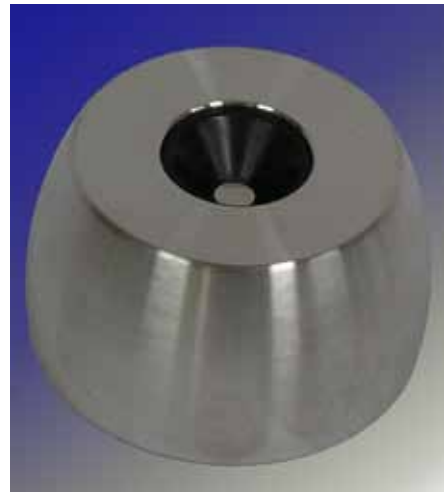


Picopin

Detachers



Hercules Build-in



Hercules Build-on



Golfball Build-in



Golfball Build-on

Accessories



TLT-85 - Label / Transmitter Tester

The TLT-85 is a label and transmitter tester. It is used to check the frequency of a hard tag or a paper label. It will also read the frequencies of a transmitter. The TLT-85 will display "OK" when it has detected the frequency of a label or hard tag. The frequency of the label or tag can then be read from the display. If the TLT-85 is held in the transmission field of an EAS antenna, it will display the frequency, the sweep width and the sweep frequency of this particular antenna. An "OK" will be displayed when these values are reliable.

The TLT-85 is switched on by a button at the front and will switch off automatically to preserve battery power.

Technical details:

Power supply : 4x 1.5V Alkaline battery AA
Frequency : 1MHz to 12 MHz
Detection methods : Internal antenna
Frequency inputs : 3.5mm Jack and Fibre Optic

Housing:

Dimensions : 197 x 100 x 40 mm.
Material : ABS Black
Weight : 407g (including batteries)

Included in set:

- TLT-85 - Label and Transmitter Tester Manual
- 4x AA Alkaline battery



RFT1752 - RF Field Tester

The RF Field Tester is able to sense an RF field that is transmitted by an deactivator or a transmitter of a RF system.

This can help to check if the transmitter or deactivator is transmitting a RF field.



PTD157 - Bodyscanner

A device which is used for the detection of 8.2 MHz. hard-and soft tags and / or sticker tags from close. The body scanner will effectively trace the tag.

The scope of the body scanner is 5-10 cm. and the dimensions are 5.5 x 8 x 3 cm.



TAT645 - Alarm transmitter

The Telsec Alarm Transmitter is a device that connects a deactivator or QF system wireless to a Telsec Control Unit.

The Transmitter is connected by a three wire connection, two for power and one for the data. Every pulse on the data line is counted as one. So when an alarm is triggered or when a sticker is deactivated a pulse will be generated on the data line.

Every 10 minutes the transmitter sends the counted value of the system to which it is connected to the Telsec Control Unit.



TSP679 - Dressing Room Protection

The dressing room protector is a device to ensure that the tags will not be removed of the clothing.



CSU - TFC30101

The CSU is a Central Synchronisation Unit, that is used to synchronize multiple systems to each other, by offering them the same signal. This signal can be send thru a 50 Ohm coax cable or thru a POF cable (Polymer Optical Fiber or Plastic Optical Fiber).

The CSU can be equipped with four output modules, which gives a maximum of 24 coax outputs or 16 POF outputs. A combination of coax and POF can also be created.

If necessary multiple CSU's can be connected to each other to create even more outputs.

